

# VISIONAEL PRODUCT OVERVIEW

Driving Operating Costs Out of  
Managing Network Resources



Cutting edge network resource  
management and provisioning for service providers



Integrated communications providers (ICPs), “xLECs” and service providers of all types today face the greatest challenges in the history of the communications market. Whipsawed by daunting competition, their best-laid business models sliced to the bone by razor-thin margins, many service providers and carriers have vanished from the landscape. Those who remain will survive only by deploying and delivering the optimal menu of services more cost-effectively than the global service provider community has ever done before. Doing so will equip them to win new business and retain existing customers by providing services that are simultaneously affordable to their customers and profitable for them as suppliers.

In search of survival and prosperity, service providers of all types are tackling ambitious yet essential goals. Looking inward, they need to leverage their existing infrastructure to deliver multiple services and serve more subscribers. Looking outward, they must embrace a brave new world where delivering a single service involves managing networks that span a spectrum of technologies and equipment vendors, and often “co-opetition” with other service providers.

## YOU CAN'T PROVISION WHAT YOU CAN'T SEE

In a nutshell: service providers who hope to survive must drive time and cost out of the service provisioning process. Yet they cannot provision what they cannot see.

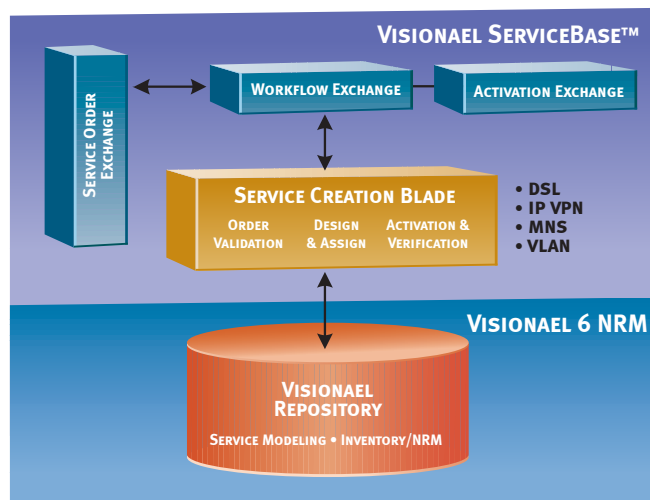
According to respected market research firms RHK and EMA, many service providers today are laboring under a profit-draining and potentially company-killing burden: 30-60% inaccuracy in knowledge of their own network inventory. This translates into underutilization of existing network equipment, overspending on new, and billions of dollars of stranded assets market-wide.

Moreover, this kind of inventory inaccuracy ensures that “flow-through provisioning” flows nowhere and washes away the hope of “clean” service orders. Service providers miss critical market windows in launching services, and once launched, services can deliver up massive costs, process nightmares and customer churn rather than hoped-for profits. Best estimates in today’s market are that it is costing service providers up to US\$600 to provision a DSL access line. IP services are still, for the most part, provisioned manually or semi-manually. This lack of process automation and workflow yields intensive skilled labor processes, re-work, and exceptions: it can take 12-16 weeks to fulfill a service order for a VPN. As a result, some SPs are experiencing slow “order-to-cash” cycles...others, a slow death.

According to RHK, operations support systems (OSS) will be instrumental in helping service providers improve free cash flow and lower operational expenses.

### VISIONAEL SOLUTIONS OFFER SURVIVAL AND SUCCESS STRATEGIES

Visionael transforms the economics of deploying, delivering and managing network services, providing carrier-grade service creation and network resource management (NRM) software solutions that form a key component of any OSS.



The Visionael solution:  
automated design & assign over inventory

Visionael 6 NRM is the solution of choice for modeling, designing and managing a centralized repository of physical and logical network inventory. It offers high-productivity engineering design capabilities as well as the ability to present detailed representations of the network in historical, current/as-built, and future views. Visionael NRM leads the market with an unparalleled combination of capabilities that deliver an accurate, real-time view of network resources:

- DataCentral™ — autodiscovery, collection and validation/reconciliation of both network topology (logical connectivity) and detailed physical network device and configuration data from multiple data sources
- Engineering and network change management
- Circuit management
- Studio design environment for secure, integrated engineering design and workflow
- Alarm correlation (logical to physical) and fault recovery

Visionael ServiceBase works seamlessly with Visionael NRM to deliver the market's first open, automated multi-service creation engine, empowering service providers to rapidly and cost-effectively deploy devices and configurations into the network and deliver high-demand services to their subscribers.

ServiceBase includes the ServiceBase extended platform, featuring:

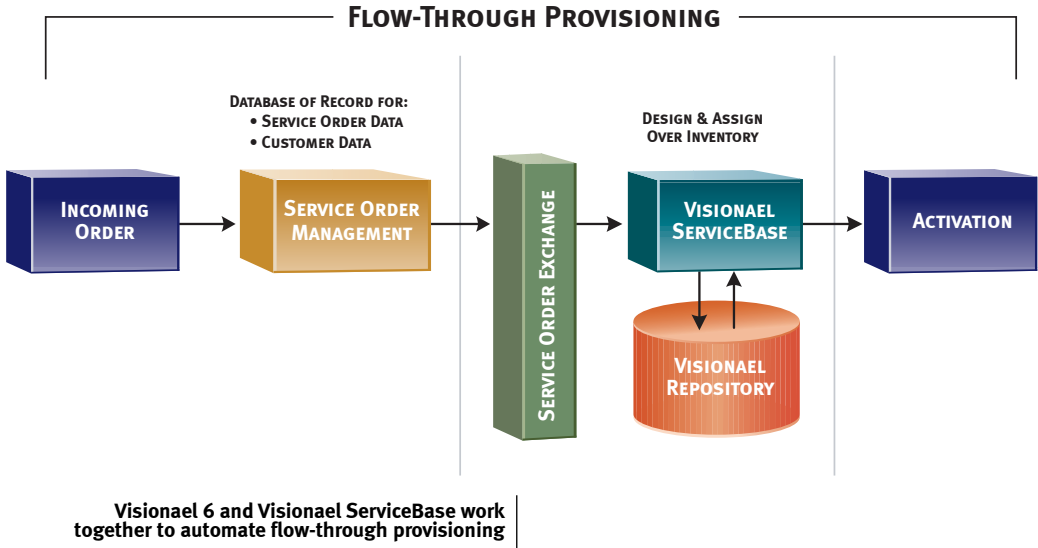
- Service Creation Blade Manager
- Workflow Exchange (task manager)
- Service Order Exchange (service order entry application)
- Service Activation Exchange (activation data viewer)
- Web server extensions

ServiceBase also includes the Blade Development Kit, featuring:

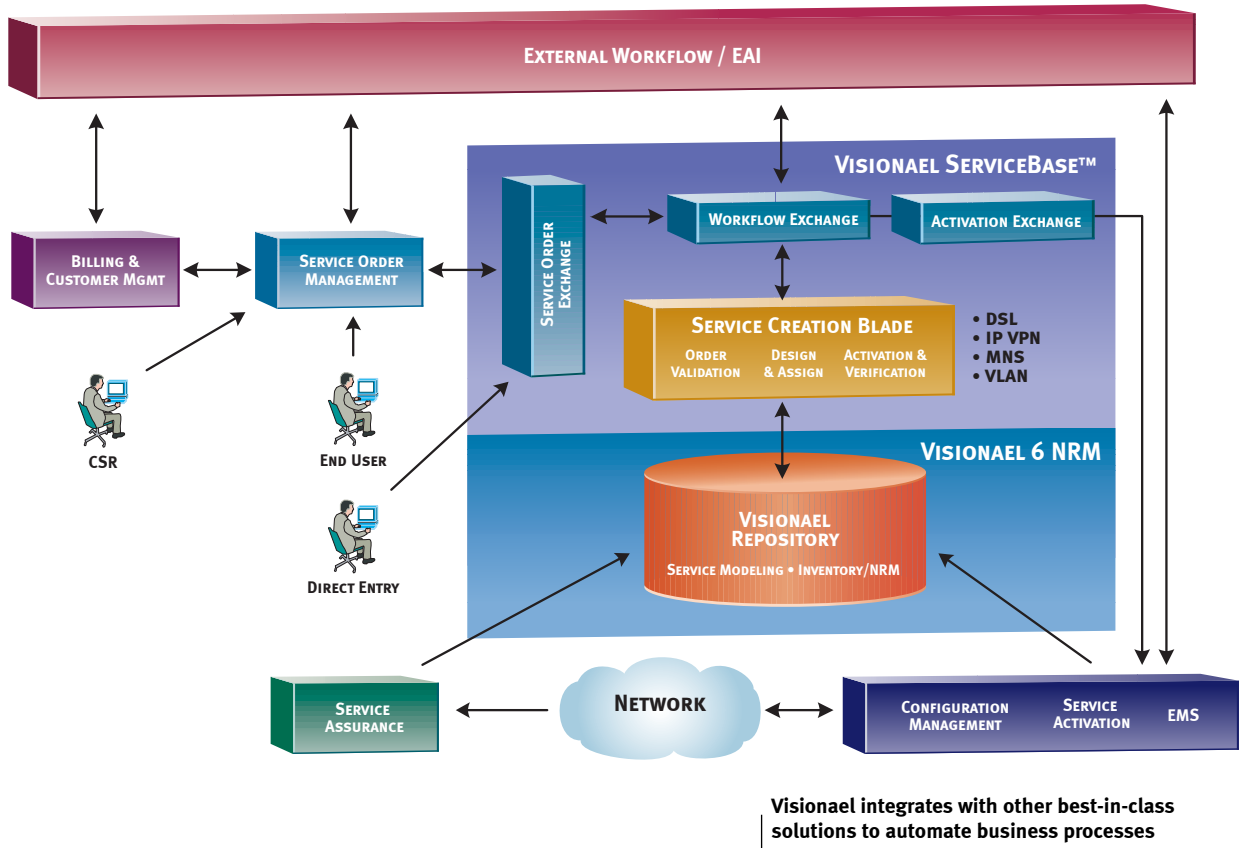
- Service Inspector
- Service and blade development libraries

Visionael offers a number of pre-built ServiceBase service creation blades, including:

- Cisco IPSec VPN
- Cisco VTP VLAN
- Cisco Managed Router (CPE)
- DSL



Bottom line: ServiceBase works hand-in-hand with Visionael 6 to optimize productivity, revenues, margins, customer retention, and time-to-profit.



**LEVERAGING VISIONAEL POWER AND PERFORMANCE ACROSS THE SERVICE PROVIDER**

Visionael 6 NRM and ServiceBase are pre-integrated to work hand-in-hand in supporting your business processes, but the benefit doesn't stop there. By building them from the ground up to integrate with other best-in-class OSS offerings such as EAI/workflow, billing & customer management, service order management, configuration management, service activation, element managers and service assurance, Visionael makes end-to-end, flow-through OSS a reality. Plus, while some other systems may feature an open architecture to allow for integration, Visionael has established alliances and co-developed pre-integrated software cartridges so that you as a service provider can devote more of your precious systems integration budget to strategic initiatives and less to integrating multiple OSS. Visionael integration cartridges and templates provide out-of-the-box integration with our partner products to make your deployments faster, less costly and more resource-efficient.

**A TRUE ENTERPRISE-WIDE SOLUTION**

You are familiar with the problems — multiple single-user design tools, connectivity, configuration and location information in inaccessible “silos,” no central repository of network knowledge, out-of-date Excel spreadsheets and key configuration data in the heads of your just-departed IT staff.

Now, with Visionael, these problems are a thing of the past. Visionael supports the efficient evolution of your network, from first planning phases through to deployment and operation. All knowledge about the network, including highly detailed data about the physical network, is captured in a central repository.

Visionael integrates with many popular network management tools and with other enterprise systems. We offer a variety of integration cartridges or you may develop a solution via Visionael APIcentral™, a broad suite of Application Programming Interfaces (APIs) based upon industry standards such as CORBA, Java, XML and COM. Now you can start boosting network efficiency and lowering network Total Cost of Ownership (TCO) with a minimum of disruption.

Visionael has been deployed by more than 50 large organizations worldwide and is fast becoming the standard resource for network resource management.

#### **BANKABLE BENEFITS AT THE BOTTOM LINE**

Visionael facilitates collaborative network design and change management and unifies your organization's efforts into a smooth-flowing, highly efficient system. As a result, you'll see bottom-line benefits in every key area of network resource planning, from design, installation and provisioning, to operation and long-term asset management.

For instance, Visionael customers frequently report:

- Reductions of 30% or more in mean time to recovery (MTTR) by correlating logical alarms with physical inventory data
- 10% to 15% reductions in design and engineering labor costs via the elimination of static, out of date data in single user "silos"
- Increased port utilization above the industry average of 30% to 40% by having accurate auto-reconciled port-level views of the network
- 15% to 25% reductions in network infrastructure costs by avoiding "over-engineering"
- Elimination of manual network audits through the use of Visionael's market-leading data collection utilities

In addition, Visionael supports disaster recovery programs giving you a full picture of your network in the event of a physical catastrophe. Full back-up licenses are available from Visionael.

#### **VISIONAEL AT A GLANCE**

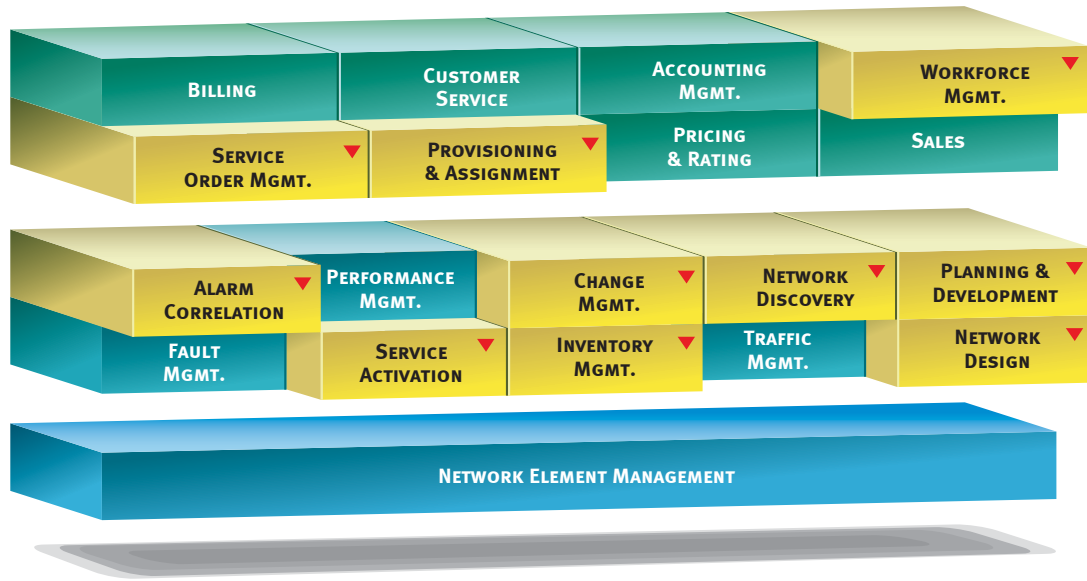
Headquartered in Palo Alto, California, Visionael transforms the economics of deploying, delivering and managing network services, providing carrier-grade service creation and network resource management software solutions that form a key component of any OSS.

Recognized in 2002 as one of UPSIDE magazine's "Hot 100" private companies, Visionael has more than 50 customers.

Visionael was incorporated in 1997, and has assembled an executive team with proven track records of software and telecommunications expertise and leadership as well as strong, strategic technology and business alliances around the globe. Visionael's major investors are VantagePoint, Banc One, Mingly Capital Venture Partners, GE Equity Capital Group, Capital Communications, Fidelity Investments, CMS and Charter Ventures.

#### **VISIONAEL SOLUTIONS FULFILL CRUCIAL AREAS OF THE TM FORUM'S TOM**

Visionael solutions provide functionality across substantial portions of the Service Management and Network Management portions of the TeleManagement Forum's Telecom Operations Map (TOM).

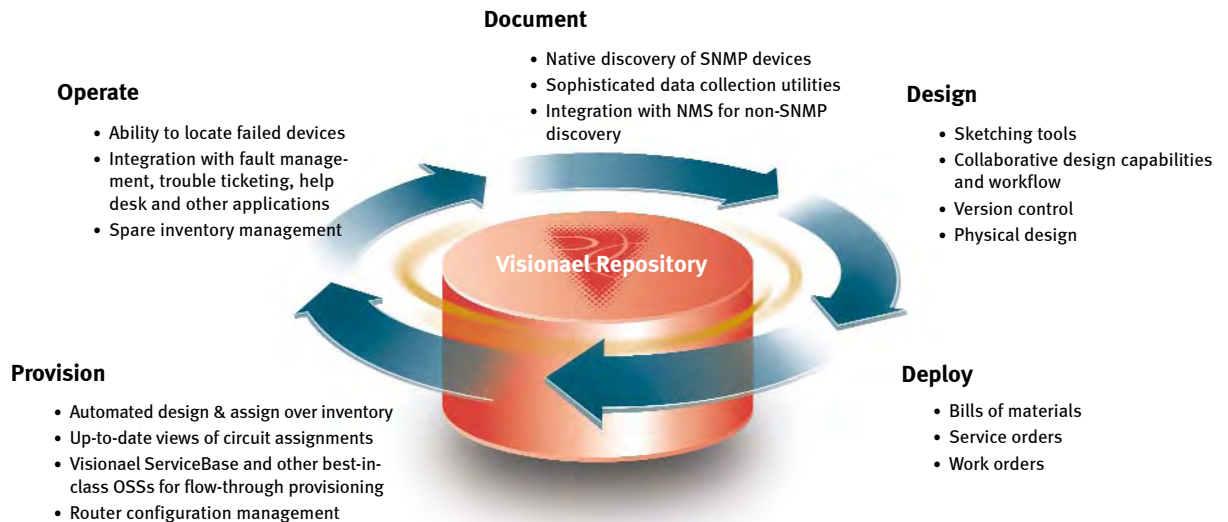


Visionael's value across the TeleManagement Forum's Telecom Operations Map (TOM)

**VISIONAEL SOLUTIONS:**

**VISIONAEL 6 NETWORK RESOURCE MANAGEMENT**

Visionael provides the leading network resource management (NRM) software solution for service providers, network outsourcers and large enterprises. Visionael 6 provides the model, framework, design and change management tools to maintain a centralized repository of network inventory. The network knowledge in this central repository is available at all times to everyone who touches the network: network engineers and planners/designers, operations, help desk staff and management. Visionael 6 NRM manages the full network life cycle and is deployed as a key element of any best-in-class OSS.



Visionael 6 NRM in the network life cycle

## DATACENTRAL'S NETWORK AUTODISCOVERY AND RECONCILIATION UTILITIES LEAD THE MARKET

Manually auditing the network or painstakingly tracing network connectivity is now obsolete. DataCentral provides autodiscovery, collection and validation/reconciliation of both network *topology* (logical connectivity) and detailed *physical* network device and configuration data from multiple data sources.<sup>1</sup>

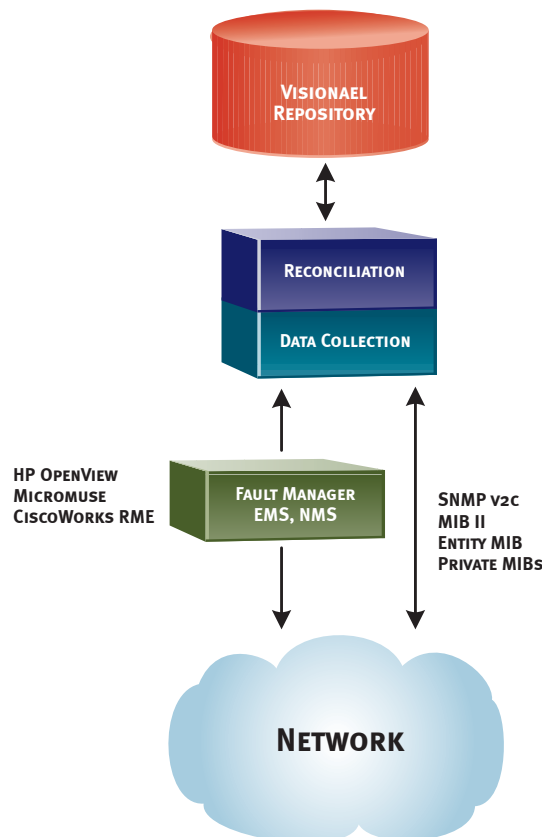
DataCentral frees you from the tedium, high cost and inescapable inaccuracies of manual audits and data entry. No other solution can automatically load all of the physical network and topology (logical connectivity) data needed for network change and inventory management, displays the discovered data so easily and attractively in graphical views, or has such rich discovery and reconciliation capabilities, across multivendor network equipment and Layers 1 through 3 of the OSI model.

This information is stored in the open Visionael NRM Repository and can be used as the foundation for ongoing network engineering and change management, as well as an accurate, current information source for network operations.

DataCentral's native autodiscovery capabilities and its ability to accept feeds from virtually any other data source mean that you can quickly populate next-generation SNMP-enabled routers and other network assets plus legacy network and switching assets alike into the Visionael NRM Repository. Plus no other vendor has as many off-the-shelf integrations with other best-in-class solutions to further automate data collection processes.

Visionael specifically designed DataCentral to address the need for discovery, collection and reconciliation of logical topology plus physical network data by:

- Service providers with IP networks
- Managed services providers (MSPs) offering services including:
  - Managed CPE
  - Internet data centers
  - VPN



Visionael 6 Data Collection

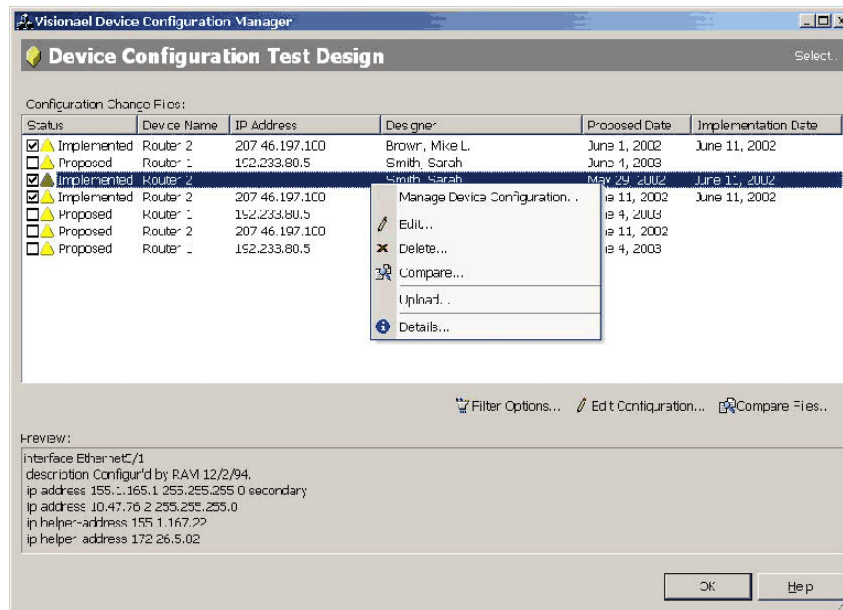
<sup>1</sup> Please note that DataCentral/Topology works exclusively in conjunction with DataCentral/Physical.

### **VISIONAEL DEVICE LIBRARY: 20,000 OBJECTS AT YOUR FINGERTIPS, READY TO DEPLOY/MANAGE**

With Visionael 6 NRM, service providers achieve a comprehensive view of their networks that includes the ability to trace transmissions through a system of cable plant and cross-connects. Highly productive network design is empowered by the Visionael 6 Device Library, which offers one of the most complete resources in the industry today—more than 20,000 network objects, comprising thousands of device types—providing ready-to-use models of today’s most commonly deployed network equipment. A complete design and change management system that utilizes historical, as-built and future views of the network enables network design teams to work collaboratively to create and deploy new capabilities.

### **DEVICE CONFIGURATION MANAGEMENT: INCREASED NETWORK UPTIME + ROI IN LESS THAN A YEAR**

Managing the complex processes for configuring network equipment is a major challenge for network engineers, provisioners and operations staff at every service provider or large enterprise. The tools used are often primitive and typically supported by inefficient, error-prone manual processes. Visionael has a solution: its Device Configuration Management (DCM) module. Using DCM makes it easier than ever before to upgrade, change and operate your network. It offers unprecedented control and productivity when planning and executing complex network changes, then provides the tools to quickly diagnose and resolve configuration error-based network outages, dramatically increasing network uptime. For most service providers, Visionael DCM will pay for itself in less than year!



DCM displays all configuration changes associated with a design in Visionael 6

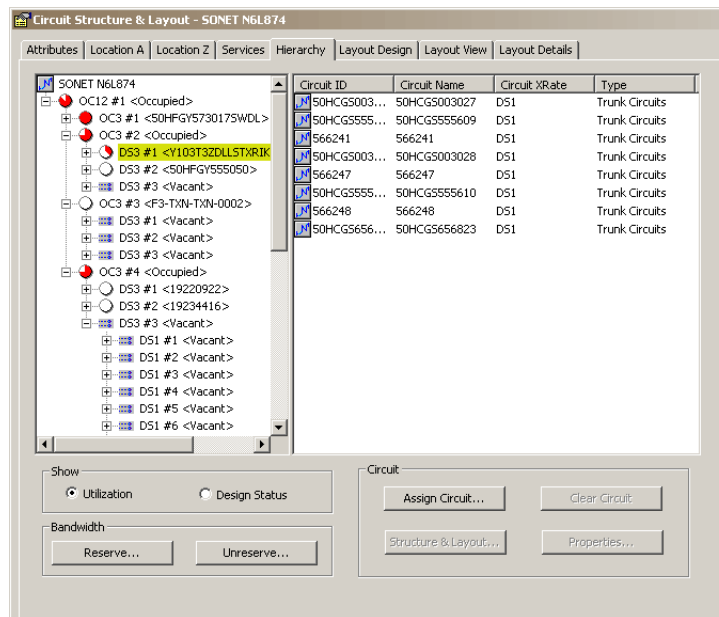
### **VISIONAEL 6 DISPLAYS PAST/PRESENT/FUTURE VIEWS TO SUPPORT PLANNING, DEVELOPMENT AND CHANGE MANAGEMENT**

Visionael 6 provides for accurate resource planning based upon historical usage and known future capacity commitments, a core resource in developing strategic network plans. It provides the capacity planner with historical (archived), current (as-built) and future (design) views of the physical network and offers the capability to view the logical layout of existing customer circuits. Historical views show the network in any past configuration. The as-built maintains a readily available snapshot of the current network. Future views of public designs, complete with effective deployment dates, show how the network might look, allowing the scheduling and reservations that service providers demand.



**SPARES MANAGEMENT: BREAKTHROUGH FUNCTIONALITY KEEPS TECHNICAL AND ACCOUNTING TEAMS HAPPY BY PROVIDING REAL-TIME VIEWS OF OPTIMIZED SPARE PARTS INVENTORY**

Visionael's Spares Management module provides a Web browser-based centralized repository of spare network equipment, organizing spares across an unlimited set of warehouses, rooms, depots and trucks. This offering replaces manual and "not in time" multi-system reporting of spares (on which many companies rely and which necessitates overstocking) with real-time spares management, providing capex savings plus immediate deployability of spare objects into the as-built network. This important new capability can also slash mean time to repair (MTTR) by quickly relating defective equipment to available spare inventory. While competitors carefully



Visionael 6 Circuit Structure Layout

specify management of only "in-service network elements," Spares Management means "not-yet-deployed" NEs are now also manageable in Visionael.

Spares Management enables customers to set minimum thresholds for specific types of equipment, with automated notifications when counts fall below defined minimums, as well as tracking repair histories for vendors, families of equipment and equipment models. Licensed as an add-on Web-based module to Visionael 6, Spares Management operates seamlessly with Visionael Studio, enabling operations personnel to find and deploy the proper spare quickly and easily.

**ACCELERATES AND ENHANCES TROUBLE & WORKFORCE MANAGEMENT**

In Visionael 6, critical workflow documents such as bills of materials, circuit layout records, change reports, and work orders are readily available to help eliminate the delay, cost and errors inherent in not having key provisioning and engineering change management data at the fingertips of the service delivery teams who need it. These capabilities combine with the population of trouble tickets in the alarm correlation process to deliver enhanced workforce management support in Visionael 6.

Visionael 6 provides out-of-the-box pre-integration with leading service assurance solutions such as HP OpenView and Micromuse Netcool Impact/Precision. Network operations centers routinely use Visionael 6 to enhance event information with detail-rich equipment data from the Visionael

6 Repository, slashing the time it takes to troubleshoot network outages and resolve critical customer issues. Visionael also integrates with the Remedy Action Request System to dramatically reduce mean time to repair (MTTR): when a problem occurs, Visionael NRM can be used by the network management system to automatically populate an AR System trouble ticket with device information, including physical location, and NOC staff can instantly link open trouble tickets to network device views in Visionael 6.

#### **VISIONAEL 6 REPORTS EXTRACT DATA FROM THE REPOSITORY AND MAKE IT WIDELY AVAILABLE**

Visionael 6 provides more than 40 preset and additional fully-customizable report formats accessible via the Visionael 6 Windows client or a Web browser using Seagate's Crystal Reports. Users choose from a collection of pre-configured reports including bill of materials, change analysis and design reports or develop their own reports using Crystal Reports Designer.

Superior software technology simplifies data warehousing approaches to extracting information from the Visionael 6 Repository. The Repository Manager imports and exports the entire database in platform-neutral XML. Experienced database developers will appreciate the standards-based approach of the Visionael Repository, making the development of a data warehousing solution a less daunting task. From a small data mart that reports specific key information to an enterprise-wide data warehouse that combines data from systems across an OSS, Visionael makes network data available quickly and efficiently.

#### **ENHANCED DOCUMENTATION PACKAGE (EDP) DELIVERS BIG SAVINGS ON EVERY NETWORK BUILD**

Network engineering teams bring a unique combination of expertise and effort to the table in support of network builds, creating voluminous work lists, sequencing instructions, diagrams and other information. At the end of the line they must next spend days assembling, compiling, checking and double-checking one or more huge documents: the product of the engineering process is documentation, and completeness and accuracy are essential. Service providers undertake hundreds of major projects and potentially thousands of minor ones every year in support of network builds. So the time engineering teams spend creating, assembling, compiling, and proofreading mega-documents for accuracy translates into massive costs.

If they could deploy a product that managed the documentation process for them, enormous savings would supplant those massive costs. Now they can. With Visionael's Enhanced Documentation Package (EDP), you literally push a button at the end of a project and get finished documents that are accurate, real-time, polished and presentable for whichever audience is the target for any report or document. Whether the desired output is implementation instructions for outsourced personnel, an itemized record of deliverables from contractors to client or executive-level documentation describing the network of physical and logical inventory, the EDP produces the desired documents matching each user's preferred criteria and format.

#### **VISIONAEL SOLUTIONS:**

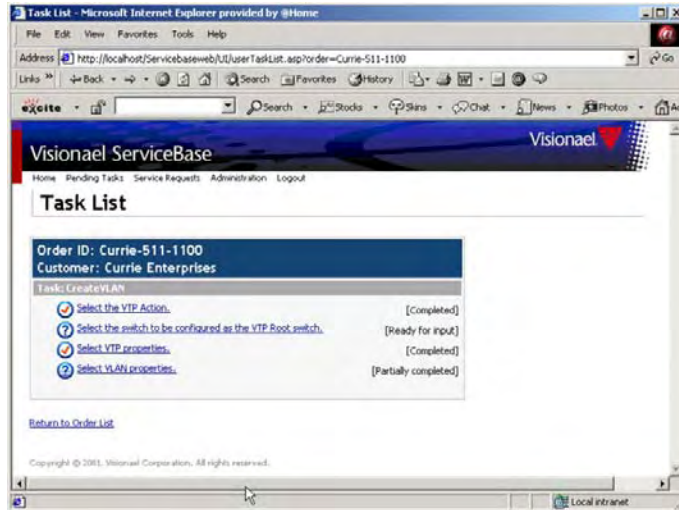
##### **SERVICEBASE SERVICE CREATION ENGINE**

Visionael ServiceBase™ is an innovative and automated approach to the creation and deployment of multiple services over a unified network infrastructure. With ServiceBase working in concert with the Visionael 6 inventory platform, service providers can now design, create, provision and activate services quickly and cost-effectively. ServiceBase is designed as a next-generation, open service creation platform that slashes provisioning costs and provides the robust yet flexible provisioning environment service providers need to support their business models.

Working with key technology partners whose applications are pre-integrated with it, ServiceBase is tailored to provide an end-to-end flow and management of data from order entry and workflow to service assurance and network inventory reconciliation.

## VISIONAEL SOLUTIONS: SERVICE CREATION BLADES

A Service Creation Blade enables developers to encapsulate the business logic and the unique provisioning process of a particular service, enabling service providers to differentiate the level of services offered (e.g. “Gold Service”).



ServiceBase provides automated and intuitive processes for service creation and provisioning

### IP VPN SERVICE CREATION BLADES: MPLS AND IPSec

ServiceBase models IP VPN services and flawlessly manages the process of service setup and service teardown that is the essence of IP VPN services. Its Service Creation Blades work with the core ServiceBase provisioning engine to automate the creation of MPLS or IPSec VPNs over multi-vendor network equipment, with configurable workflow and provisioning processes to assign customers to VPNs and VPNs to devices. This slashes the time and cost of initial service creation and ongoing service delivery associated with MPLS or IPSec VPN deployments.

### MANAGED ROUTERS SERVICE CREATION BLADE

The Managed Routers Service Creation Blade can streamline the provisioning and activation processes for managed routers, helping you as a service provider to process huge volumes of service requests without increasing your provisioning resources. The MNS blade implements the management channel between equipment on the customer edge (CE) and the provider edge (PE), helping to create a managed router service by adding one or more devices at the customer premises and the circuit necessary to communicate with the routers. This includes the assignment of the data attributes from the managed router design to Visionael inventory, and the translation of that data into a detailed XML data structure for activation.

### VLAN SERVICE CREATION BLADE

ServiceBase makes VLANs easy to set up, modify and tear down. The VLAN blade allows network engineers to quickly model, track and provision virtual LANs (VLANs) from an inventory-based perspective. The VLAN blade specifically checks for equipment and port capacity and performs configuration and assignment of VLAN parameters via a web browser. First the blade captures order data from the customer’s SOM application via workflow integration. A design engineer takes the order and initiates ServiceBase to check for resource availability of switches, ports and existing connectivity. The blade then enables the design engineer to group specific nodes, such as servers and desktops, to form a VLAN.

### DSL SERVICE CREATION BLADE

Visionael provides an automated way for service providers to deploy and deliver DSL services: the DSL Service Creation Blade. The DSL blade provides service creation functionality for DSL via the Visionael ServiceBase platform. The DSL blade gives service providers the means to respond to a high volume of DSL service requests quickly and accurately, leveraging ServiceBase to create DSL services over multivendor equipment.

### BLADE DEVELOPMENT KIT (BDK) SUPPORTS CREATION AND DEPLOYMENT OF NEW SERVICES

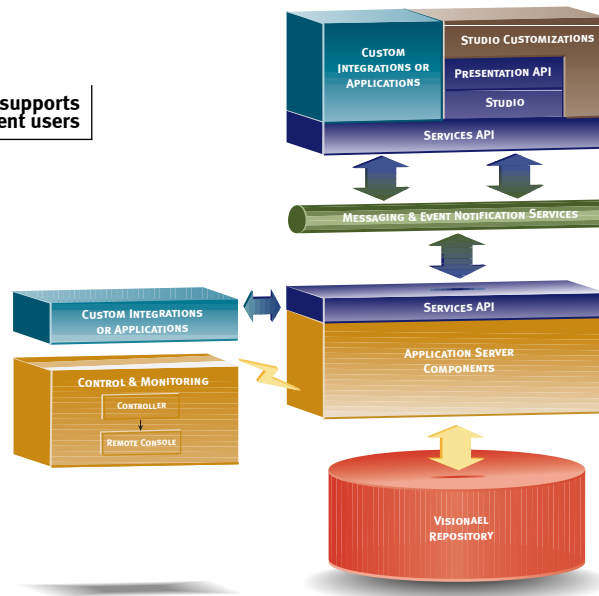
The Visionael ServiceBase Blade Development Kit (BDK) is a versatile set of development tools, object classes, and libraries that enables new services of any type to be quickly added to the ServiceBase portfolio with minimal code development. The BDK consists of API documentation for blade developers, a collection of Java class structures that describe how to create a blade, and other specialized development tools to edit XML and service specific data. These tools enable self-contained unit testing and simplify the creation of test data and examples.

### VISIONAEL SOLUTIONS:

#### OPEN, SCALABLE, THREE-TIER ARCHITECTURE

Visionael solutions are built on a three-tier architecture that delivers robust performance, supporting millions of objects and hundreds of concurrent systems users. Distributed processes across multiple middle-tier servers enhance system performance, minimizing the bandwidth required for communications with client workstations. The three-tier architecture also reduces cost of ownership since administrators can introduce changes at the application and data layers without having to upgrade client workstations.

Visionael's open, scalable 3-tier architecture supports millions of networks and hundreds of concurrent users



The **Client tier** is supported on Microsoft Windows 2000, NT and 98. The **Middle (or application) tier** manages application logic and database communications, provides CORBA v2 compliance and is supported on Sun Solaris, Microsoft Windows NT and 2000, and HP-UX. The console graphical user interface (GUI) makes configuring, administrating and monitoring the middle tier a straightforward procedure. The **third (or data) tier**, where the Visionael 6 Repository resides, utilizes Oracle or Microsoft's SQL Server on a variety of platforms.

### **MULTIPLE CONTROLLERS BOOST SCALABILITY, PROVIDE DISASTER RECOVERY AND BUSINESS CONTINUITY**

Visionael's three-tier architecture includes a controller application that manages the system's traffic and communications, and Visionael customers can implement two or more of these controllers, each on a different server, to create a "multiple controllers" architecture. When run in parallel, these additional controllers provide increased system scalability, balancing the load of hundreds of concurrent clients. Multiple controllers also give Visionael customers a new, affordable option when implementing resilient systems with built-in redundancy and failover capabilities.

Each controller may be licensed to run independently. This means that in addition to increased scalability, each independently licensed controller remains available as a "hot" standby in the event another controller server fails. This solution offers a simple and effective alternative to expensive clustering and replication options. It also ensures that there is no single point of system failure in a Visionael 6 deployment, thereby meeting the needs of environments requiring high availability.

### **EXTENDING/LEVERAGING VISIONAEL SOLUTIONS**

#### **APICENTRAL: PATHWAY TO VISIONAEL-POWERED SOLUTIONS**

Visionael APIcentral™ offers ways to access Visionael solutions across platforms with various programming languages. The Visionael Presentation API can extend the Visionael 6 Studio GUI through custom menus or property pages, event handling and other methods. Support for COM allows its use with Visual Basic, Visual C++ or any of the variety of object controls to create quick integrations with Visionael solutions. A powerful Services API includes a CORBA Interface Definition Language (IDL) and complete Convenience Libraries along with an XML object import/export. The CORBA IDL exposes the complete toolset of the application's server-based functionality. Convenience Libraries are available in Java, C++ and COM for developers who prefer an object-oriented approach.

#### **SERVICEBASE EXCHANGES PROVIDE READY INTERFACE TO PARTNER SOLUTIONS AND OTHER APPLICATIONS**

Visionael ServiceBase contains several technology exchange points to enable ready integration with other best-in-class applications:

- Service Order Exchange adds new services to the product & service catalog, manages customer information, creates new service requests and integrates with leading customer relationship management (CRM) and service order management (SOM) applications.
- Workflow Exchange contains templates that drive service tasks, integrates with leading workflow systems and can even provide standalone operation of the system.
- Activation Exchange stores activation data with the service, makes it directly viewable through a Web browser and provides data delivery to a configuration management system, service activation system, element management system (EMS) or direct to a user for CLI

**STRATEGIC ALLIANCES WITH OTHER INDUSTRY LEADERS EXTEND VISIONAEL POWER AND PERFORMANCE ACROSS THE MARKET AND AROUND THE GLOBE**

Visionael is committed to forging alliances with other best-in-class business and technology partners so that customers can realize the full power of Visionael solutions across all business processes. Visionael has focused these efforts through its World Alliances program in which it teams with best-in-class SIs and other OSS vendors to provide customers with a fully-integrated OSS solution.

Visionael extends the functional scope and business value of its solutions through out-of-the-box integration with leading network equipment, business support systems (BSS), configuration, service assurance, service activation, asset management, outside plant and EAI/workflow solutions from:

- BMC/Remedy
- Cisco
- HP OpenView
- Intelliden
- Intergraph
- Micromuse
- MRO/MainControl
- Orchestream
- Redback
- Siebel
- Step 9
- Vitria

**Business Partners:** Visionael partners with leading SIs and consultants who implement, customize and integrate Visionael into a comprehensive solution for their customers worldwide, including:

- Accenture
- Alpitel
- AST Group
- CompuTel
- Dimension Data
- Getronics
- GMSI
- Inline Group
- Logica
- NSS
- NST
- ParaRede
- Pride
- Scan
- Soluziona
- Windward

**MORE THAN A SOLUTION: A PARTNERSHIP**

Visionael Corporation is dedicated to serving our customers' needs, and we'll work hard to ensure your complete satisfaction. Visionael offers Silver and Gold support and maintenance options and full implementation services.

The Visionael professional services organization is supplemented by fully certified systems integrator partners both in North America and Europe.

**FOR MORE INFORMATION**

Visionael maintains regional sales and support offices throughout the United States and Europe.

To download or request additional product information, or to learn how Visionael can help your organization, visit [www.visionael.com](http://www.visionael.com).

## **VISIONAEL FEATURE SUMMARY**

- Worldclass network resource management and service creation solution based on tried and true technology
- Automated design and assign of network services
- End-to-end view of multi-vendor, multi-technology networks
- Multi-state, multi-segment network model in a central repository available to other network management applications
- Management of spare inventory
- Extensive device library containing more than 20,000 network objects
- Circuit creation, management and documentation
- Central management of router configuration files
- Highly productive network engineering, design and diagramming
- Next generation, fully scalable three-tier architecture with failover options
- Extensive suite of APIs based on CORBA, COM, XML and Java
- DataCentral autodiscovery, collection and validation/reconciliation of network topology and physical network device data for all SNMP and non-SNMP devices
- Pre-integrated with other best-in-class OSS/NMS solutions

## **SUPPORTED PLATFORMS**

### **Visionael Client:**

- Windows 98/NT/2000 (Internet Explorer for WebCentral™)

### **Visionael Middle Tier:**

- Windows NT/2000, HP-UX, Sun Solaris

### **Visionael Repository:**

- Oracle, SQL Server

[www.visionael.com](http://www.visionael.com)



Visionael Corporation  
410 Cambridge Avenue  
Palo Alto, CA 94306  
Ph: 650-470-8920  
Fax: 650-470-8921

Visionael SARL  
114 bis rue Michel Ange  
F-75016 Paris  
France  
Ph: +33.140.71.28.28  
Fax: +33.140.71.28.99  
Email: [emea@visionael.com](mailto:emea@visionael.com)

Features subject to change without notice.  
©2002 Visionael Corporation. All rights reserved.  
Visionael®, the Visionael logo, DataCentral,  
WebCentral, ServiceBase and APIcentral are  
trademarks of Visionael Corporation. All other  
trademarks or registered trademarks are the  
property of their respective holders and are  
mentioned for identification purposes only.

Part Number spov1202/500